

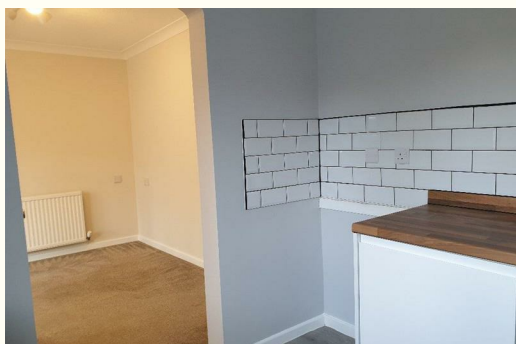


STEPHENSON BROWNE



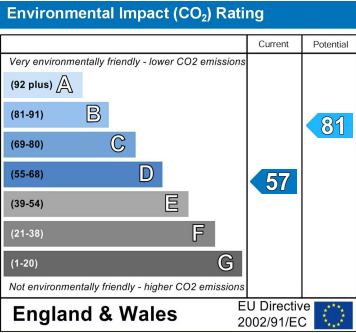
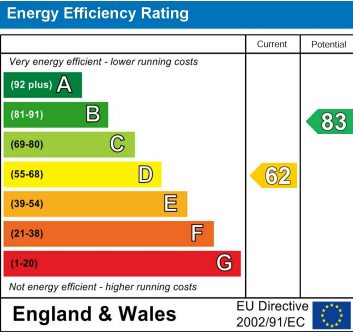
**64 Farmleigh Drive, Cheshire  
CW1 3PZ  
£1,100 PCM**

AVAILABLE JANUARY 2026 A GREAT property with much to offer. This well presented spacious home offers a lounge, dining room, new kitchen, conservatory, downstairs wc, en suite master bedroom, wardrobes to 2 bedrooms, wet room, garage, and enclosed rear garden. The location sits between Bentley and Leighton Hospital and is close to a well regarded Primary Academy School. Sorry cats/dogs.



IMPORTANT NOTICE

Whilst we endeavor to ensure accuracy of our letting's descriptions, it is the responsibility of the viewer to ask any more specific questions in any area of importance before making a formal application. Services are not tested prior to move in. All tenancies are available initially for a minimum term which will be confirmed by property by the agent. With the exception of shared accommodation, the tenant is responsible for council tax, water, gas and electric plus TV/media where applicable - please note we cannot confirm the cost of these as they are different from person-to-person usage. Rent is paid one month in advance at all times. No cash alternative deposit scheme is offered.



232 Nantwich Road, Crewe, Cheshire, CW2 6BP

T: 01270 252251 | E: crewelettings@stephensonbrowne.co.uk | W: www.stephensonbrowne.co.uk